

2013-2014

Circular Head Progress Group Annual Report



Author: Megan Riley
CHPG Administration Officer
2013-2014

Contents

- Vision & Mission Statements
- Presidents message
- Organisation structure
- Special Projects Summary



Vision

“Supporting our community”

Mission Statement

“Identify, build on and foster economic, community, recreation and cultural development opportunities for the people of the Circular Head region”

Presidents Report

A big thank you to the Progress Group committee for the work they have put in over the last 12 months and to Megan our administration officer. Much of what we have accomplished over the last year is in our Special Projects Report.

The Marcus River Power Supply is very close to completion and it is this sort of infrastructure that will bring more development and prosperity to our region.

Almost exactly 12 months ago the first shipment of cattle from King Island to Stanley occurred and it's amazing to think that well over 10,000 head have made this journey; an absolute win/win for cattle producers on King Island and from an animal welfare issue saving 5-6 hours of travel time.

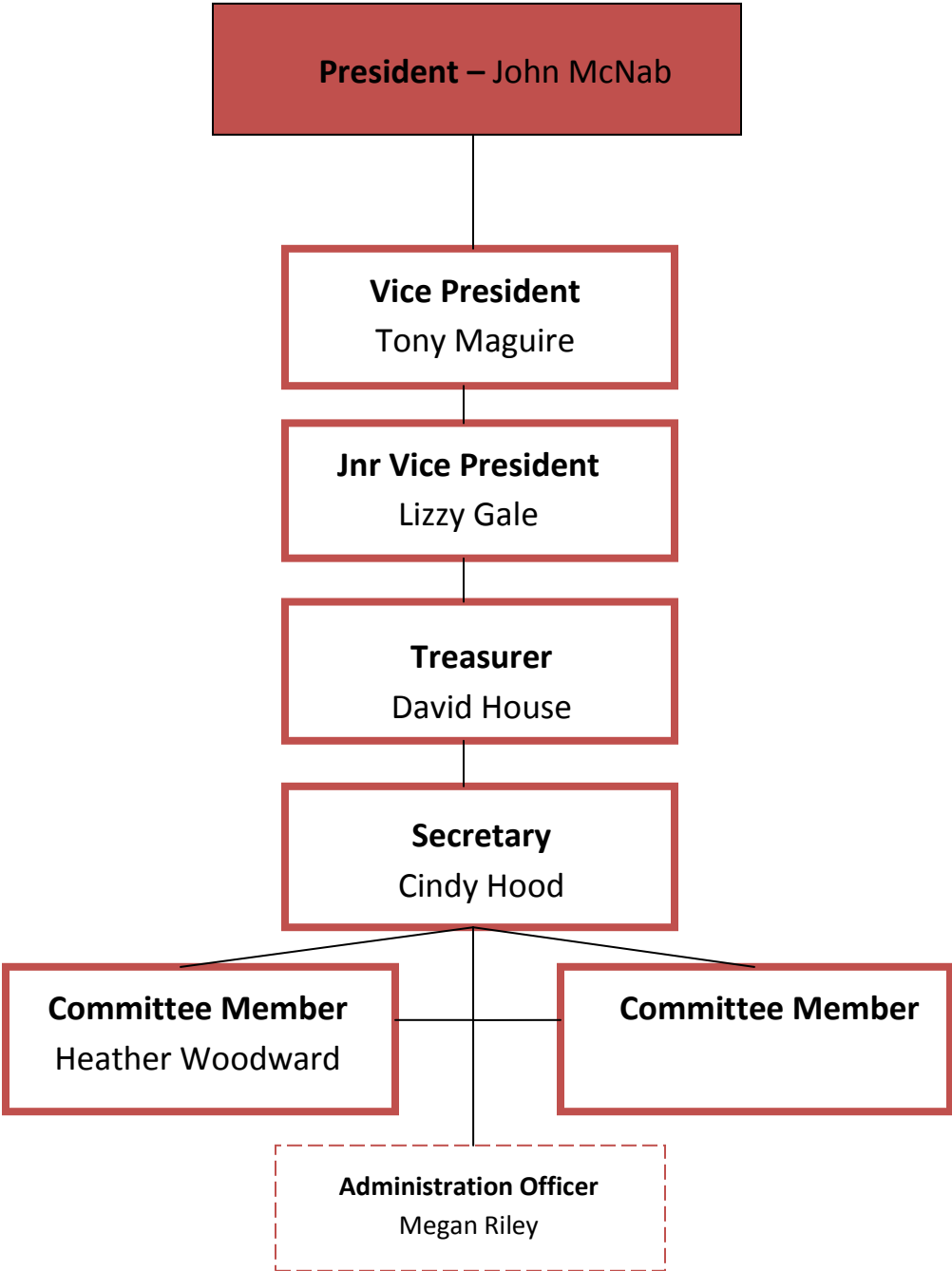
We have undertaken a study into the Dairy Expansion Initiative for Circular Head looking at incentivising the land conversion process and the same for growing existing dairy farms and removing barriers to dairy conversions. We have had a meeting with a group of young and progressive dairy farmers gathering their thoughts on the way forward to grow the industry.

A special mention and congratulations for the work done by the Business Group in what has once again has been another challenging year for small business and retail in Circular Head.

We are grateful for the support we receive from our council, and the Mayor Daryl Quilliam and our new G.M. Tony Smart.

John McNab
President
CH Progress Group

Organisation Chart



Special Projects Summary

1. Harcus River Power Supply completion of Works

2013/14 saw the final steps of the project completed. Some of the key milestones to achieve included:

- Approval for road widening
- Detailed archaeology study for the Aboriginal Heritage unit
- PCAB approval re flora & fauna
- Vegetation tender approved and completed
- Ongoing progress reports to landowners
- Sign off for powerlines by landowners
- Final update notice and thank you sent to all landowners from CHPG
- 50 Poles erected already.
- Official opening – scheduled for July 2014 (tbc)

2. Stanley Port Re-opening

Greenhams continued to underpin the project to final stages acknowledging the initiative and the support of the CHPG. Some of the key steps achieved over the past twelve months include:

- First freight crossing – August 2013
- Stanley Wharf infrastructure works
- Stanley business / community approval for vehicle access
- JBS Abattoir also using service, from time to time
- Over 10,000 cattle have been through since service commenced
- Tas Ports have agreed to upgrade the 'Roll on Roll Off' facility, as a result of continued lobbying
- Freight cartage opportunity being explored
- Flow on Benefits to CH community

3. Reprint Circular Head Business & Community Directory

- Re print to meet demand
- Very successful and well received.

4. Land Use Mapping

- With support from CHC, CHPG engaged Brett Miller to assist in a detailed Land Mapping and production of maps that indicate the opportunities for better land use. Esk Mapping and GIS has identified maps showing higher and better use (HBU) Land use Grazing to cropping,

- grazing to dairying, remnant vegetation to agriculture, and all plantation land available for conversion.
- We are now starting to see the benefits of this study with possible VDL development projects and also the Dairy Expansion Initiatives

5. Shree Minerals Approval

- CHPG lent support and assistance to the project as required to ensure best outcomes. CHPG remain in liaison with Shree after the opening. Shree Minerals sales to 31st March at 86,448 Tonnes at \$3,697,000, with 496,773 tonnes waste stripped.

6. Administration

- Numerous letters sent for businesses seeking support for opportunities and outcomes as well as acknowledgment of achievements in business.
- GST Registered
- Collaborative Support – CH Tourism and Stanley chamber of Commerce

7. Memberships

- Membership representation increased from 363 financial in 2013 to 601 as at 30/06/14.

